

# FROM INSIGHT TO IMPACT. SHAPE THE FUTURE OF SPINE CARE.



Accelerate your evidence generation and transform routine registry data into high-impact research with EUROSPINE.

# TURN ROUTINE DATA INTO REAL-WORLD EVIDENCE

EUROSPINE Nested Studies enable you to transform the registry data you may already contribute into research that truly matters.

Evaluate new procedures, implants, or care pathways with speed, scientific rigour, and credibility, without the cost and complexity of running standalone studies.

## WHY CONDUCT YOUR NEXT STUDY WITH EUROSPINE?

As the trusted, international registry for spine care, EUROSPINE's Spine Tango provides the platform for generating real-world evidence that informs clinical practice across Europe and beyond.



Standardised data collection that ensures consistency and scientific validity.



Quality reporting that ensures data accuracy and research credibility.



Established surgeon and hospital participation across international markets.



Conduct research across implants, procedures, pathways and health resource use.



Powered by  
**NEC**

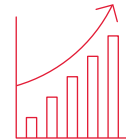
# RESEARCH THAT GOES FURTHER

Conducting a Nested Study through EUROSPINE provides hospitals and clinicians access to trusted registry data, a collaborative international network of researchers, and a faster route from study concept to publication, enabling your research to have greater impact.



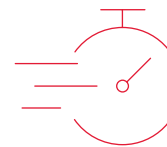
### Clinical and academic advancement

- Evaluate new surgical approaches, implants, and care pathways using robust registry data.
- Strengthen your academic profile through collaborative research and conference presentations.
- Contribute to advancing clinical knowledge and influencing guidelines and standards.



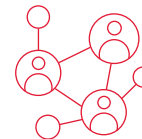
### Benchmarking and quality improvement

- Benchmark your hospital's outcomes against global peers using internationally accepted measures.
- Access standardised quarterly and annual reports on patient outcomes, implants, and quality indicators.
- Use up-to-date benchmarking to guide internal quality improvement programmes.



### Efficiency and resource savings

- Leverage existing registry data instead of building studies from scratch.
- Minimise administrative workload by using data already captured in routine care.
- Move from concept to publication faster using established data infrastructure.



### Flexible study design options

- Conduct retrospective, prospective, or hybrid studies.
- Add new data points easily to address specific research questions.



### Collaboration and funding opportunities

- Participate in high-impact studies sponsored by device manufacturers or other partners.
- Gain early insights through multicentre collaborations and potential funding support.

# SUPPORT EVERY STEP OF THE WAY

From design to publication, our end-to-end approach includes:



## Protocol development

Operationalise your research questions and study design.



## Data access approvals

Support for research application preparation.



## Longitudinal data collection

Retrospective, prospective or augmented data capture.



## Analysis & reporting

Statistical analysis plans, dashboards and reports.



## Publication

Analytical results presentation and manuscript development.

## Powered by NEC

As EUROSPINE's trusted partner, NEC Software Solutions provides the secure data infrastructure and research support services that power the Spine Tango registry. From data management and analytics to technical guidance and reporting, NEC enables hospitals and clinicians to conduct Nested Studies efficiently, ensuring accuracy, security, and compliance at every stage of the research process.

## Make your data matter

Whether you're part of Spine Tango, considering joining, or interested in research, EUROSPINE makes it easy to conduct a Nested Study that turns clinical data into meaningful insights. Contact us to learn more.

[spinetango@eurospine.org](mailto:spinetango@eurospine.org) [health\\_servicedesk@necsws.com](mailto:health_servicedesk@necsws.com)

Learn more from NEC

Scan the QR code to read NEC's latest white paper;

**"Unlocking the Power of Registry Data: How health data partnerships can drive safer, smarter patient care."**

